



1

2x 11+8



2

2x 9+10



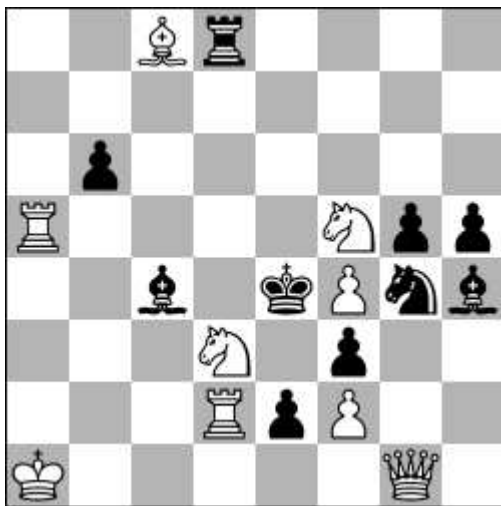
3

2x 12+9



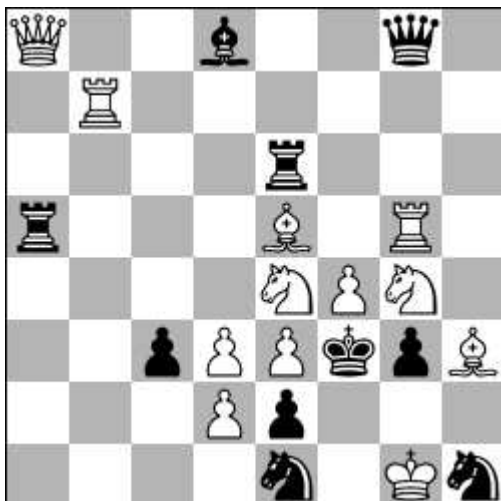
4

3x 9+8



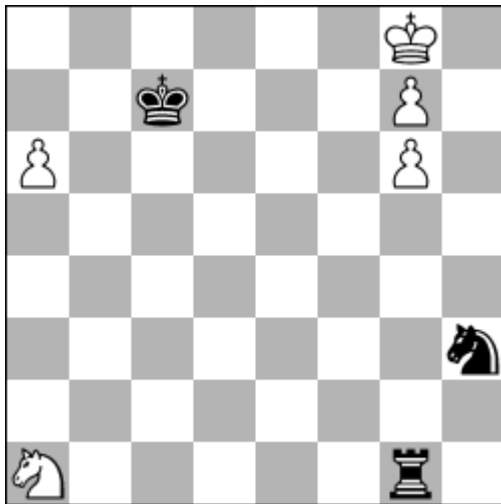
5

3x 9+10



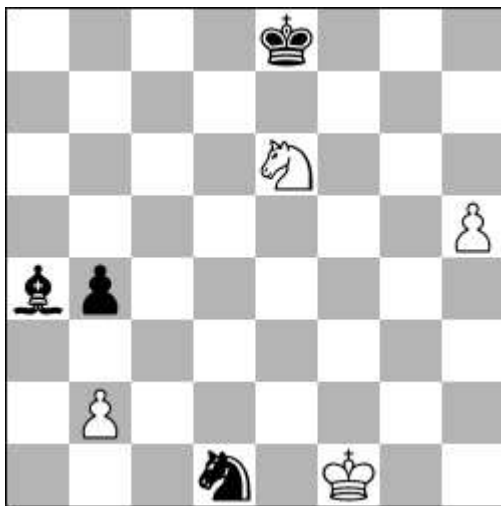
6

3x 12+10



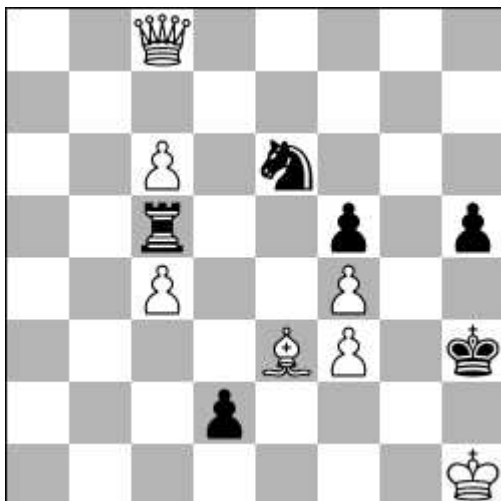
7

win 5+3



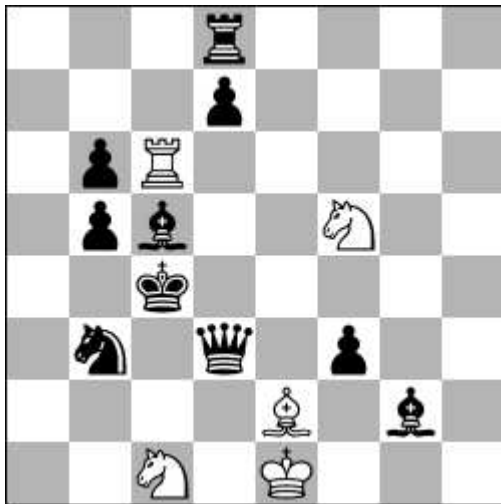
8

draw 4+4



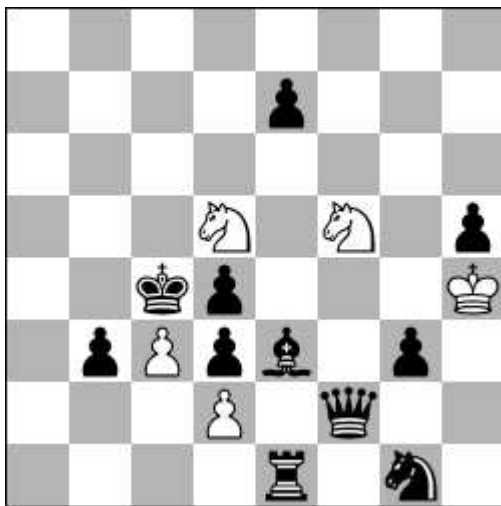
9

win 7+6



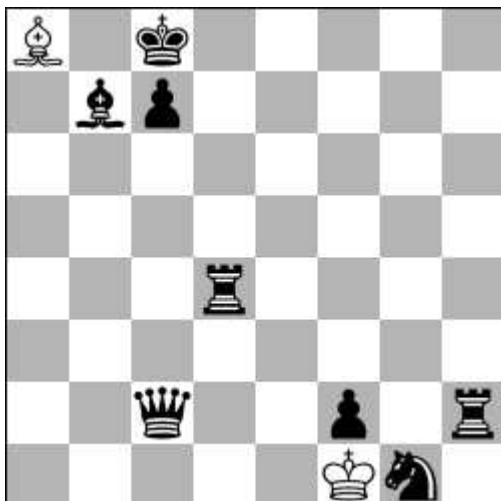
10

hx2 b) bPb5>b4 5+10



11

hx3 b) sRe1>g2 5+11



12

hx7 2+8



13

4x 8+12



14

4x 8+14



15

5x 8+14



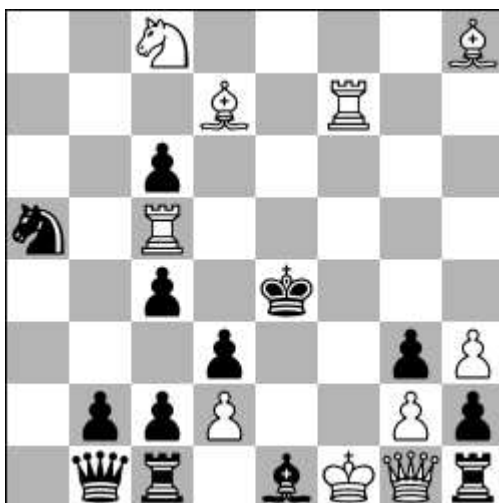
16

sx2 11+13



17

sx3 11+12



18

sx6 10+13