

**1**

**2x** 12+8



**2**

**2x** 11+7



**3**

**2x** 9+12



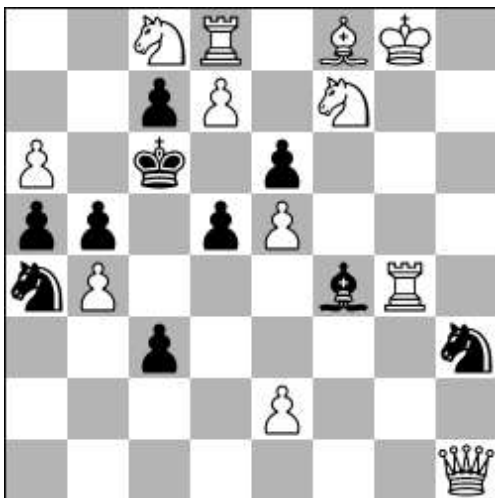
4

3x 8+12



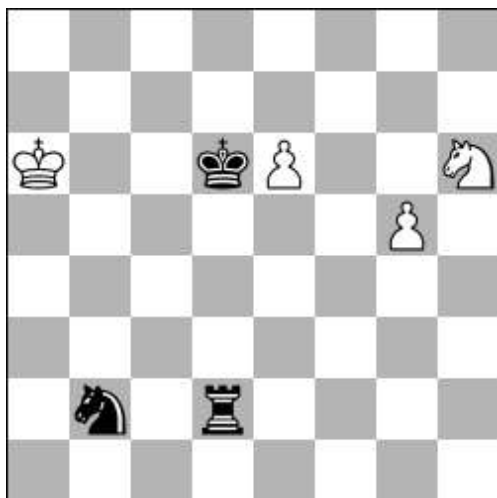
5

3x 14+9



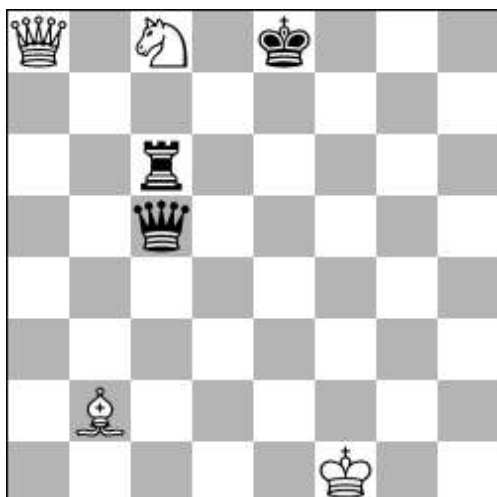
6

3x 12+10



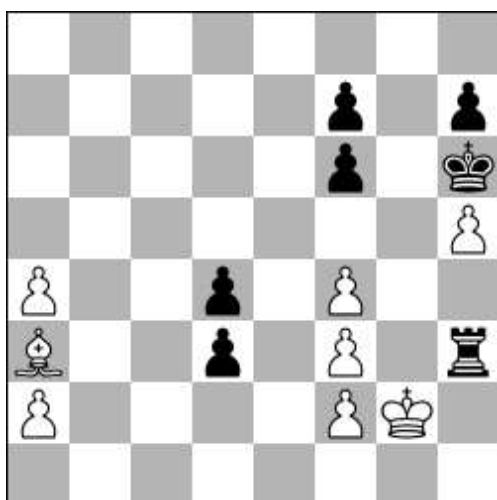
7

*draw* 4+3



8

*win* 4+3



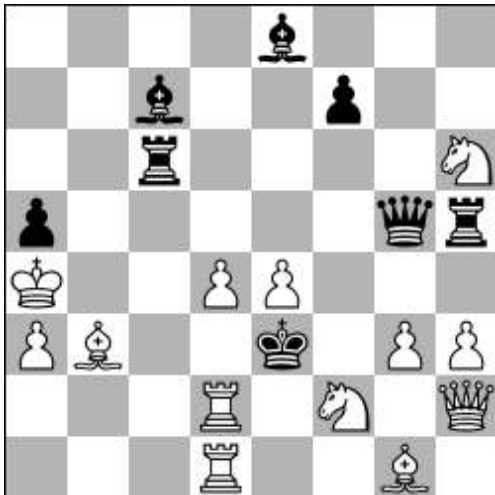
9

*win* 8+7



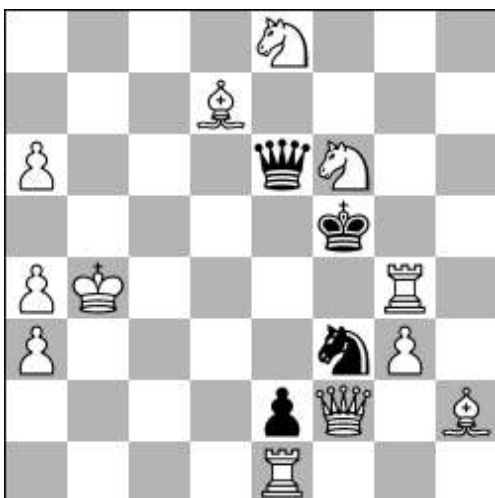
**10**

**sx2 b) +bPf3 5+11**



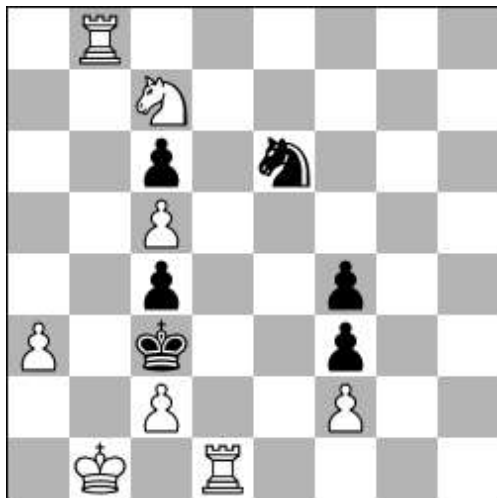
**11**

**sx3 13+8**



**12**

**sx5 12+4**



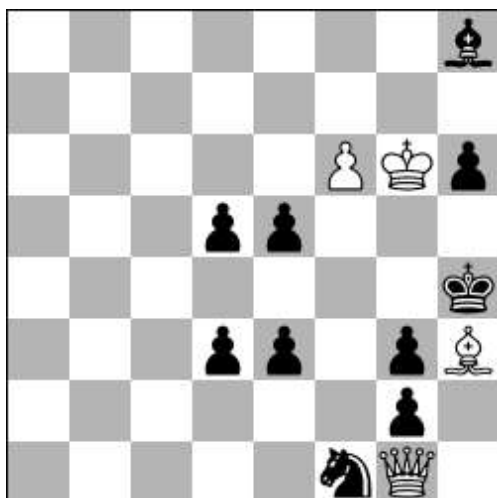
**13**

**4x** 8+6



**14**

**5x** 5+14



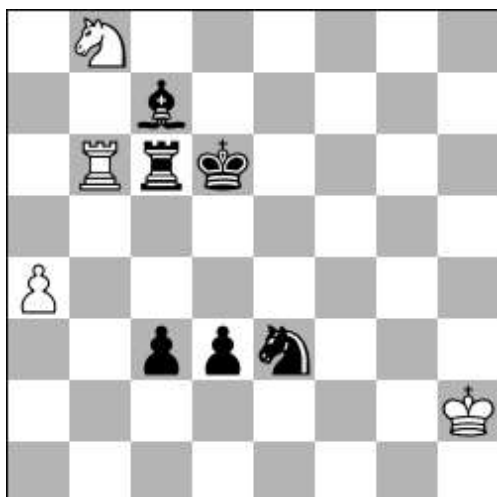
**15**

**6x** 4+10



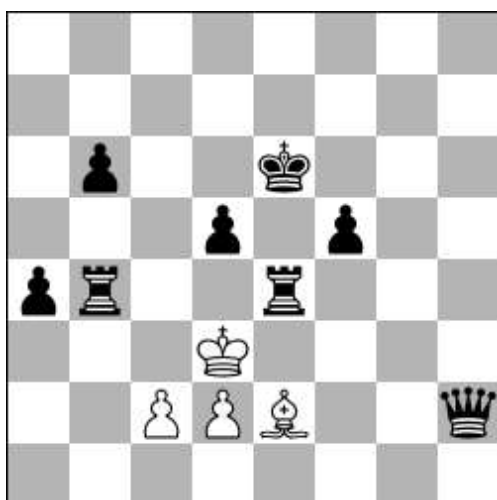
**16**

*hx2 2 sol b) sBd6>a3 4+10*



**17**

*hx3 3 sol 4+6*



**18**

*hx4 2 sol 4+8*