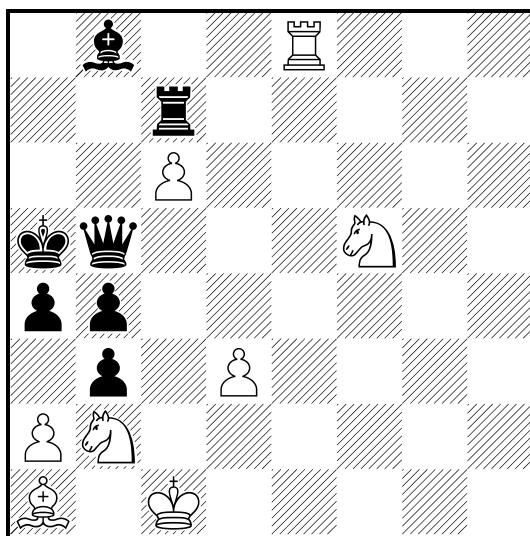


Diagram



Draw (8+7)

1.♖e5!

[1.♘c4+? ♔a6 2.♖e5 ♚xc6 3.♖a5+ ♔b7 4.♘fd6+ ♚xd6-+]

1...♖xc6+

[1...bxa2 2.♘c4+ ♔a6 3.♖xb5 ♔xb5 4.♘d4+ ♔a6 5.♔b2=]

2.♘c4+ (unblocking of ♔a1) ♖xc4+ 3.dxc4 ♚xe5!

[3...♔xe5 4.cxb5 ♔xa1 5.axb3 a3 6.♔b1=]

4.♔xe5 bxa2!

[4...♔xe5 5.axb3 axb3 6.♔b1 ♔b6 7.♘e3 ♔c5 8.♘d1 ♔xc4 9.♘b2+=]

5.♔a1! (bishop-switchback on a1)

[5.♔f6? a3 6.♘e3 ♔f4 7.♔c2 ♔a4! 8.♘d1 b3+ 9.♔d3 b2 10.♘b2+ axb2 11.♔xb2 ♔b3 12.♔a1 ♔d6!-+]

5...♔f4+!

[5...a3 6.♔c2 ♔a4 7.♘d4=]

6.♔b2!! (reblocking of ♔a1)

[6.♔d1? b3 7.♘d4 ♔d6! 8.♔d2 ♔b4 9.♔d3 a3 10.♔c3+ ♔a4 11.♘b3 ♔xb3-+]

6...b3 7.♘d4!

[7.♔c3? ♔e5+ 8.♘d4 ♔xd4+ 9.♔xd4 ♔b4-+]

7...♔e5

[7...♔d6 8.♘b3+ axb3 9.♔xb3=]

8.♔c1! (unblocking of ♔a1)

[8.♔a3? ♔d6+ 9.♔b2 ♔b4 10.♘c2+ ♔xc4-+]

8...♔f4+

[8...♔d6 9.♔c3+ ♔b6 10.♔b2=]

9.♔b2! (reblocking of ♔a1)

[9.♔d1? ♔d6! 10.♘c6+ (10.♔d2 ♔b4 11.♔d3 a3 12.♘b3 ♔xb3-+) 10...♔b6 11.♘e5 a3-+]

9...♔b4

[9...♔e5 10.♔c1 = repeat moves]

10.♘c6+ ♔c5 11.♘a5! ♔b4

[11...♙e5+ 12.♚a3 ♙xa1 13.♘xb3+! axb3 14.♚xb3=]
12.♘c6+ ♚xc4
[12...♚c5 13.♘a5 = repeat moves]
13.♘a5+ ♚b4 14.♘xb3!
[14.♘c6+? ♚b5! 15.♘d4+ ♚c4-+]
14...axb3 stalemate.

Switchback of the white bishop with its un-/reblockings and model stalemate at the end.